



PIÈCES DE SOCIÉTÉ

Cahier IV.

pour la

Guitare

composées et dédiées

À MONSIEUR

C. Theodor Demiani

par

F. A. BODSTEIN.

Propriété de l'Éditeur.

HAMBURG,

chez Jean . Aug. Böhme.

Oct. 20.



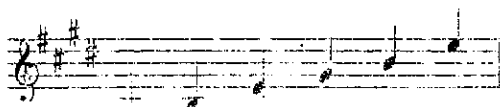
Pr. 6 gr.

O.L.HOLM'S Boghandel.

Adelgade No. 220
KJØBENHAVN

661.0704

Stimmung
in E dur.



Langsam mit Gefühl.

INTRODUCTION.

Musical notation for the Introduction section, including dynamic markings like *pp* and *dol.*, and performance instructions like *harm: nat:*.

Larghetto.

THEMA.

Musical notation for the Thema section, including dynamic markings like *ff*, *p*, and *mf*, and performance instructions like *barre II*, *barre VII*, *barre V*, *harm: nat:*, and *rallentando.*



Più presto.

barré. V.

VAR: I.

Più lento. Sous. harm:

Tempo primo.

VAR: 2.

harm:

This section contains six staves of musical notation. The first staff begins with a treble clef, a key signature of two sharps (G major), and a 3/4 time signature. The music consists of eighth and sixteenth notes, with some rests. The notation includes repeat signs and first and second endings at the end of the sixth staff.

Andante con espressione.

Steyersches
Alpenlied.

This section contains four staves of musical notation for the piece 'Steyersches Alpenlied'. It starts with a treble clef, a key signature of two sharps, and a 3/4 time signature. The tempo is marked 'Andante con espressione'. The notation includes various rhythmic values and rests, ending with a final cadence.

Risoluto.

VARIATION:

Musical score for Variation section, featuring six staves of music in treble clef with a key signature of two sharps and a 3/4 time signature. The notation includes various rhythmic patterns, slurs, and dynamic markings. A section marked 'VII.' with a wavy line is present in the fourth staff. The piece concludes with a double bar line and repeat signs.

Das tiefe E in D zu stimmen.

GALLOPPADE.

Musical score for Galoppade section, featuring four staves of music in treble clef with a key signature of two sharps and a 2/4 time signature. The notation is characterized by a fast, rhythmic gallop. The piece concludes with a double bar line and the word 'Fine.' written above the staff.

Das tiefe E in D zu stimmen.

Heiter.

6/8

harm:

nat:

harm:

1. 2.

harm:

harm:

harm:

harm:

5