



LE CALME

Caprice

Pour Guitare seule

Composé et Dédié à son Elève

M^{lle} Crabouillet

P A R

FERDINAND SOR

Prix : 4^f. 50.

Clav. 50.

à PARIS, au Magasin de Musique de P. CHATEL, Boulevard des Italiens, N^o 11.
et chez l'Auteur, Rue Favart, 335.

LE CALME.
CAPRICE.
Par
Ferdinand SOR.

Andante.

First musical staff with treble clef, key signature of two sharps (F# and C#), and a 7/8 time signature. It contains a series of eighth and sixteenth notes, some beamed together, with various accidentals.

Second musical staff, continuing the melody. It includes a fermata over a note with the marking "ha." above it. A finger number "3" is written below the staff.

Third musical staff, featuring more complex rhythmic patterns with beamed eighth and sixteenth notes.

Fourth musical staff, showing a continuation of the melodic line with various articulations and dynamics.

Fifth musical staff, containing several measures with beamed eighth notes and sixteenth notes.

Sixth musical staff, featuring a mix of eighth and sixteenth notes with some slurs.

Seventh musical staff, concluding the page with a final melodic phrase.

First musical staff, treble clef, key signature of two sharps (F# and C#). It features a complex rhythmic pattern with many beamed eighth and sixteenth notes, and some triplets. The staff ends with a fermata over a final chord.

Second musical staff, treble clef, key signature of two sharps. It continues the rhythmic complexity with various note values and rests, including some triplet markings.

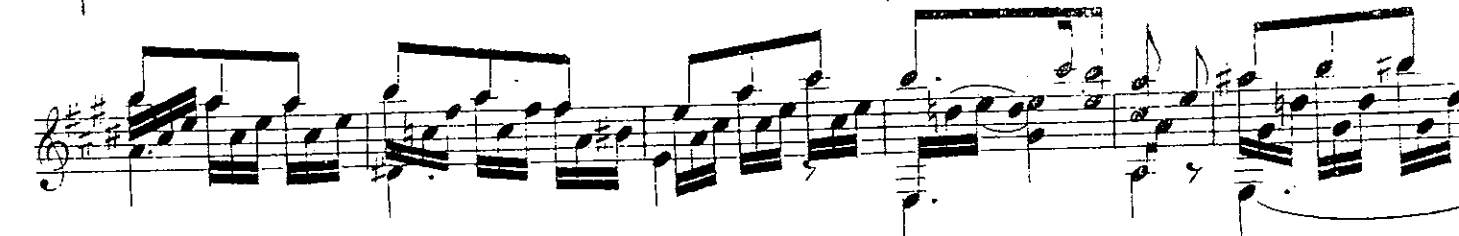
Third musical staff, treble clef, key signature of two sharps. The notation includes many beamed notes and rests, with some triplet markings.

Fourth musical staff, treble clef, key signature of two sharps. It features a dense texture of beamed notes and rests, with some triplet markings.

Fifth musical staff, treble clef, key signature of two sharps. The notation includes many beamed notes and rests, with some triplet markings.

Sixth musical staff, treble clef, key signature of two sharps. It continues the complex rhythmic pattern with various note values and rests, including some triplet markings.

Seventh musical staff, treble clef, key signature of two sharps. It features a dense texture of beamed notes and rests, with some triplet markings. The staff ends with a fermata over a final chord.



The image shows a page of musical notation, likely for a piano or similar instrument. It consists of eight staves of music. The key signature is three sharps (F#, C#, G#), and the time signature is 3/4. The notation is dense, featuring many beamed notes and rests. There are several performance markings: 'cres' (crescendo) appears on the third staff, and 'espes' (possibly 'espressivo') appears on the fourth staff. A Roman numeral 'VII' is written above the fourth staff. The page number '18' is centered at the bottom.

harm:

3

harm:

2

harm: